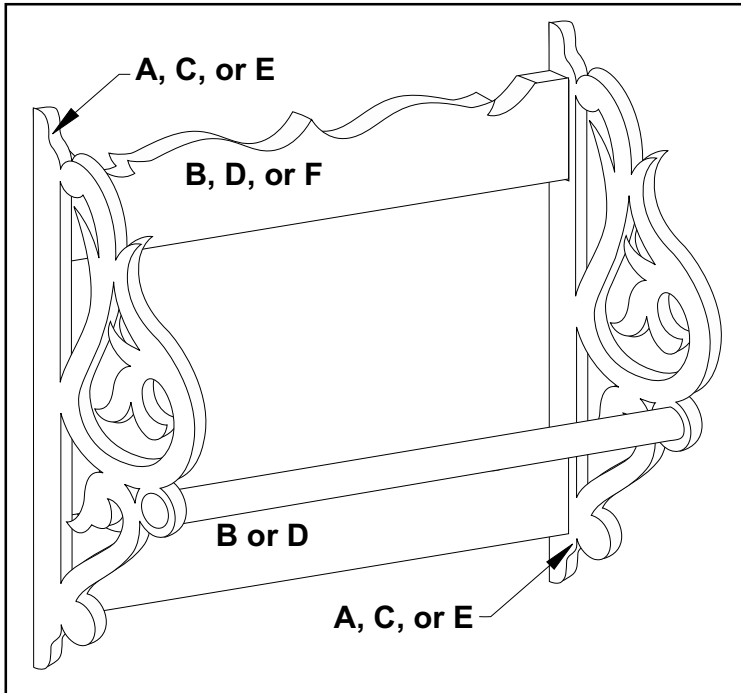




#P289 - Towel Racks (3 sizes)

Coordinating your bedroom, bath, or kitchen will be a cinch when you use our decorative Towels Racks. The full-size pattern set is complete with 3 sizes - large, medium and small. Use the large rack bath towels, the medium rack for paper towels or hand towels, and the small rack is just right for toilet tissues or a single hand towel. 6 1/2"W to 31"W.



#P289 Quilt / Towel Rack Instructions

1. Select your material from a variety of hardwoods or solid core plywood.
2. Measure each pattern piece and cut the work pieces to size accordingly. Sand as necessary.
3. Make all pattern pieces by adhering the paper patterns to the work pieces with a repositionable spray adhesive. Cut the outer shapes and any interior designs. And drill where indicated.
4. Remove all paper patterns. Sand where needed. The edges can be rounded by sanding or using a small roundover router bit if desired.
5. Assemble by first attaching the Brackets to their respective Backs. Then insert the dowels and finish as desired. Note: on the large quilt rack insert the dowel before attaching the 2nd Bracket. On the dowels where finial caps will be used - glue only one of the 2 finial caps onto the dowel.

GREAT AMERICAN
SCROLLSAW
 DOWNLOADABLE PATTERNS™



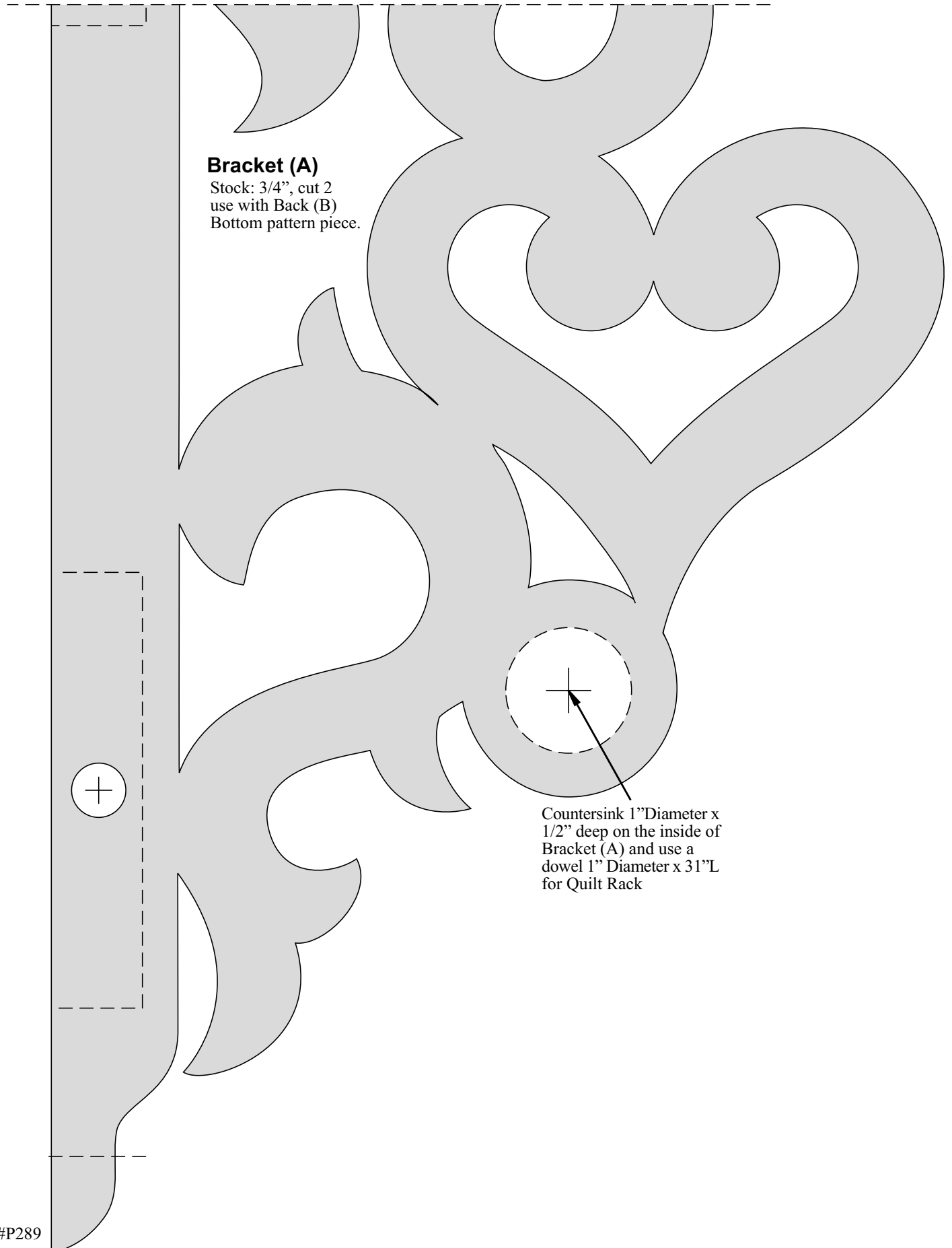
The Berry Basket © Copyright 2002 • All Rights Reserved
www.greatamericanscrollsaw.com • a division of The Berry Basket

QUILT/TOWEL RACK			
#P289			
Description	Item	Qty	Size
Bracket	A	2	3/4" T x 7 1/2" W x 15 1/2" L
Back	B	2	3/4" T x 3" W x 30" L
Bracket	C	2	3/4" T x 6 1/2" W x 13 1/2" L
Back	D	2	3/4" T x 3" W x 12" L
Bracket	E	2	3/4" T x 5" W x 10" L
Back	F	1	3/4" T x 3" W x 5" L

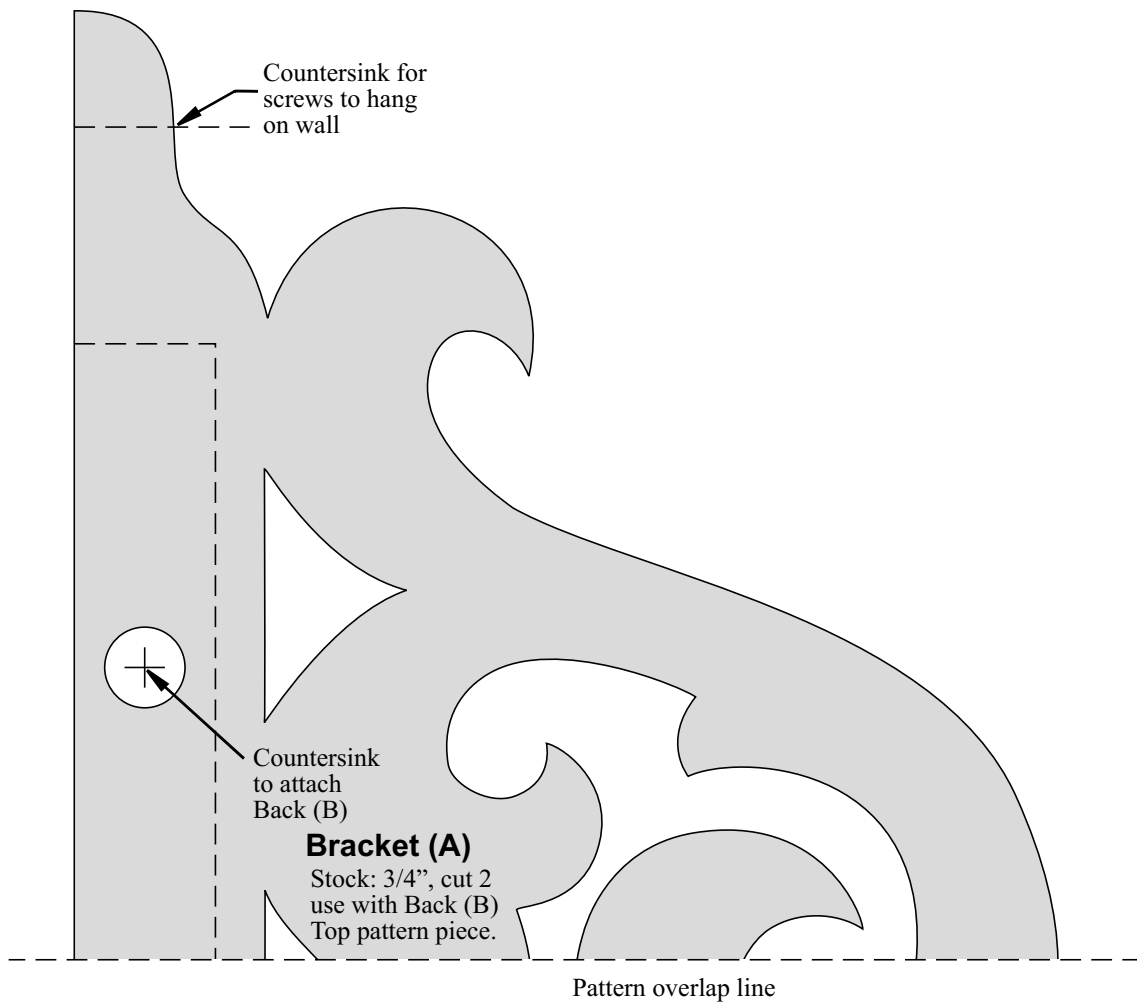
Pattern overlap line

Bracket (A)

Stock: 3/4", cut 2
use with Back (B)
Bottom pattern piece.



Countersink 1" Diameter x
1/2" deep on the inside of
Bracket (A) and use a
dowel 1" Diameter x 31"L
for Quilt Rack



#P289

Back (B)

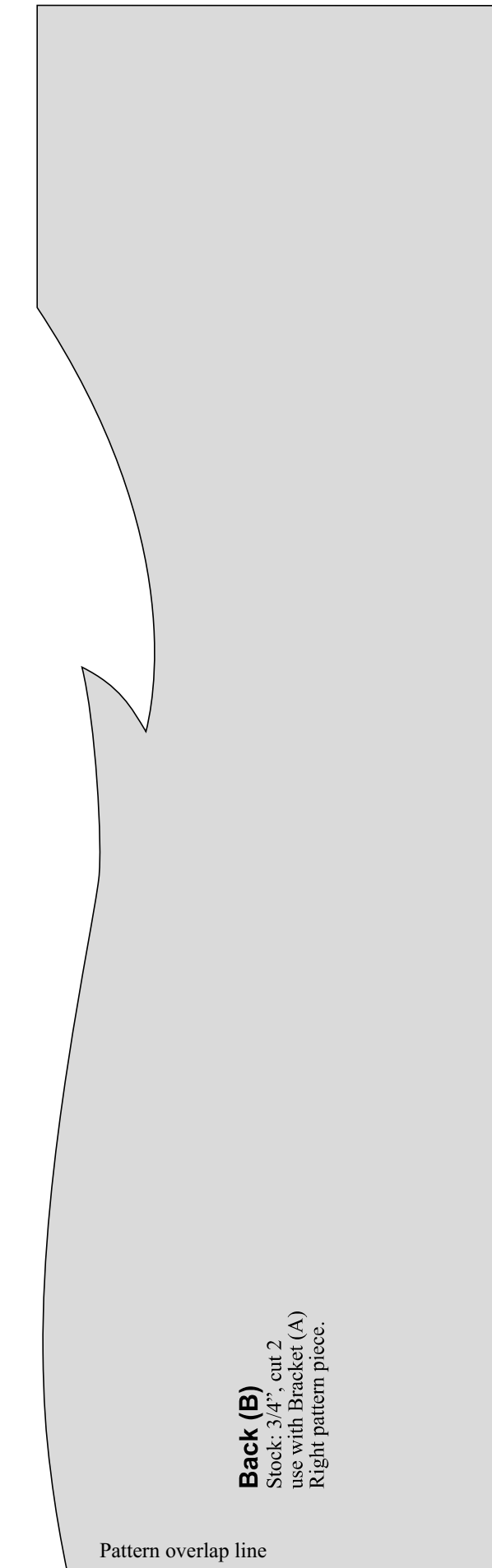
Stock: 3/4", cut 2
use with Bracket (A)
Left pattern piece.

Pattern overlap line

Back (B)

Stock: 3/4", cut 2
use with Bracket (A)
Middle pattern piece.

Pattern overlap line

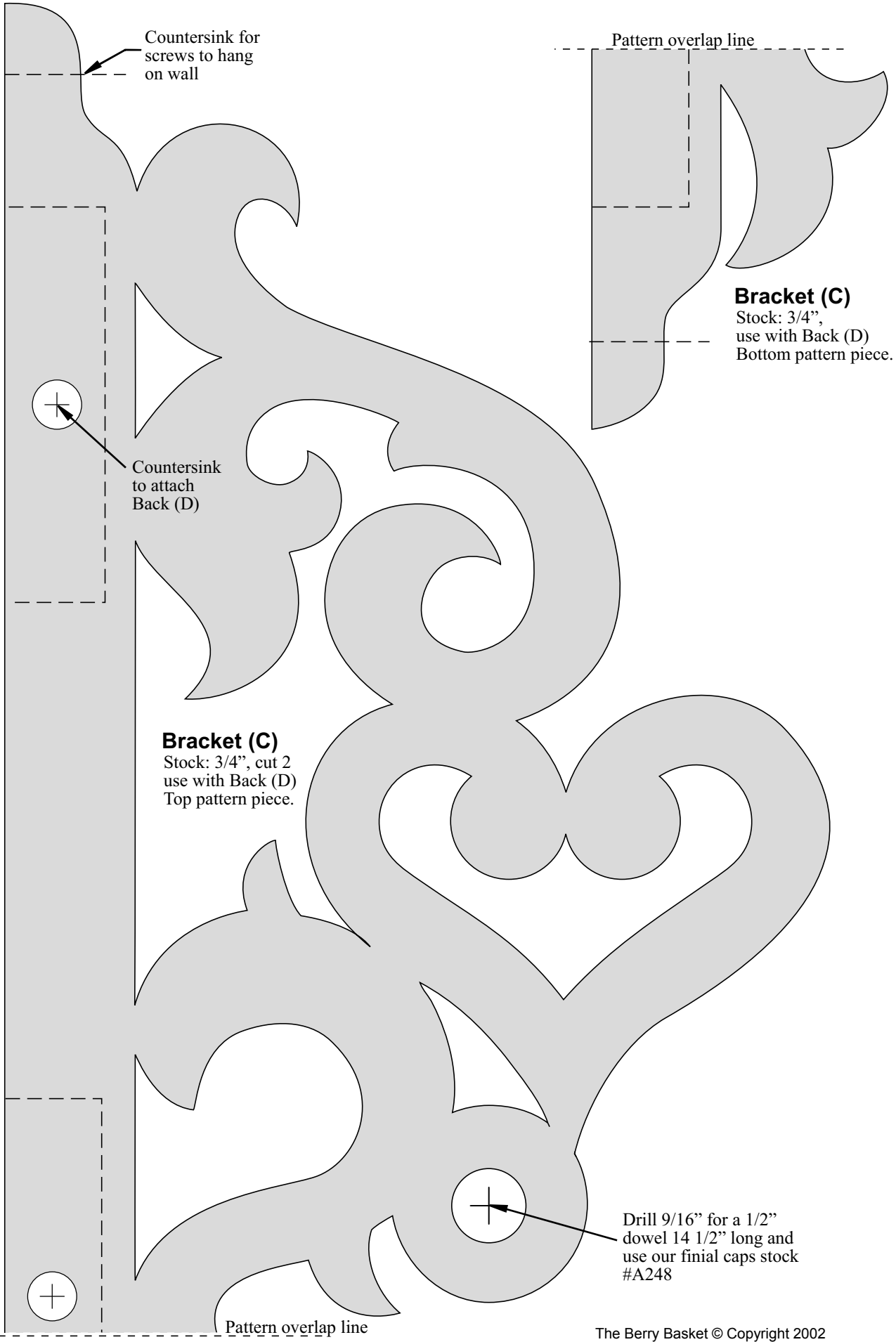


Back (B)

Stock: 3/4", cut 2
use with Bracket (A)
Right pattern piece.

Pattern overlap line

#P289



Countersink for screws to hang on wall

Pattern overlap line

Bracket (C)
Stock: 3/4",
use with Back (D)
Bottom pattern piece.

Countersink to attach Back (D)

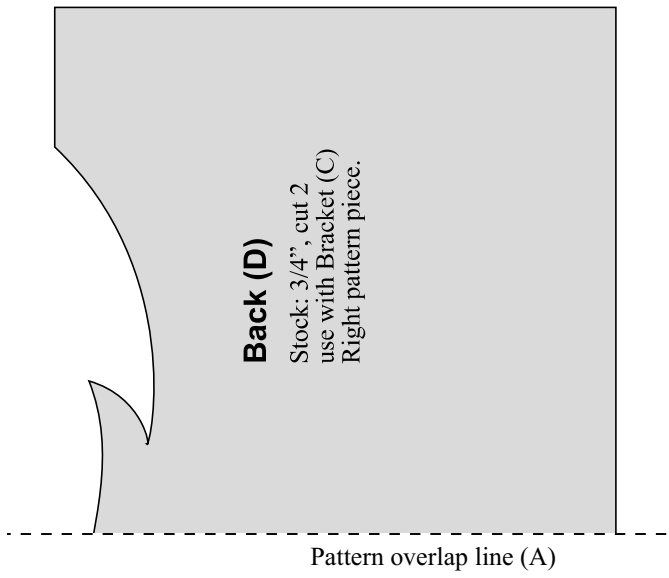
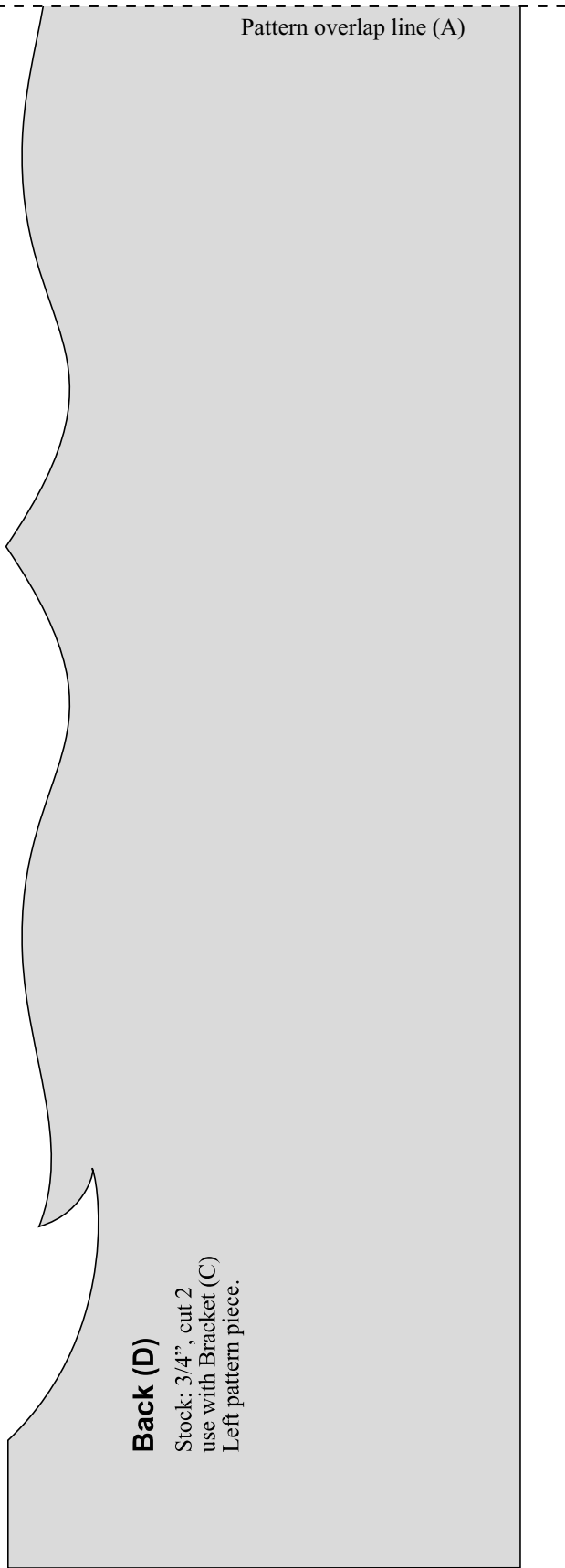
Bracket (C)
Stock: 3/4", cut 2
use with Back (D)
Top pattern piece.

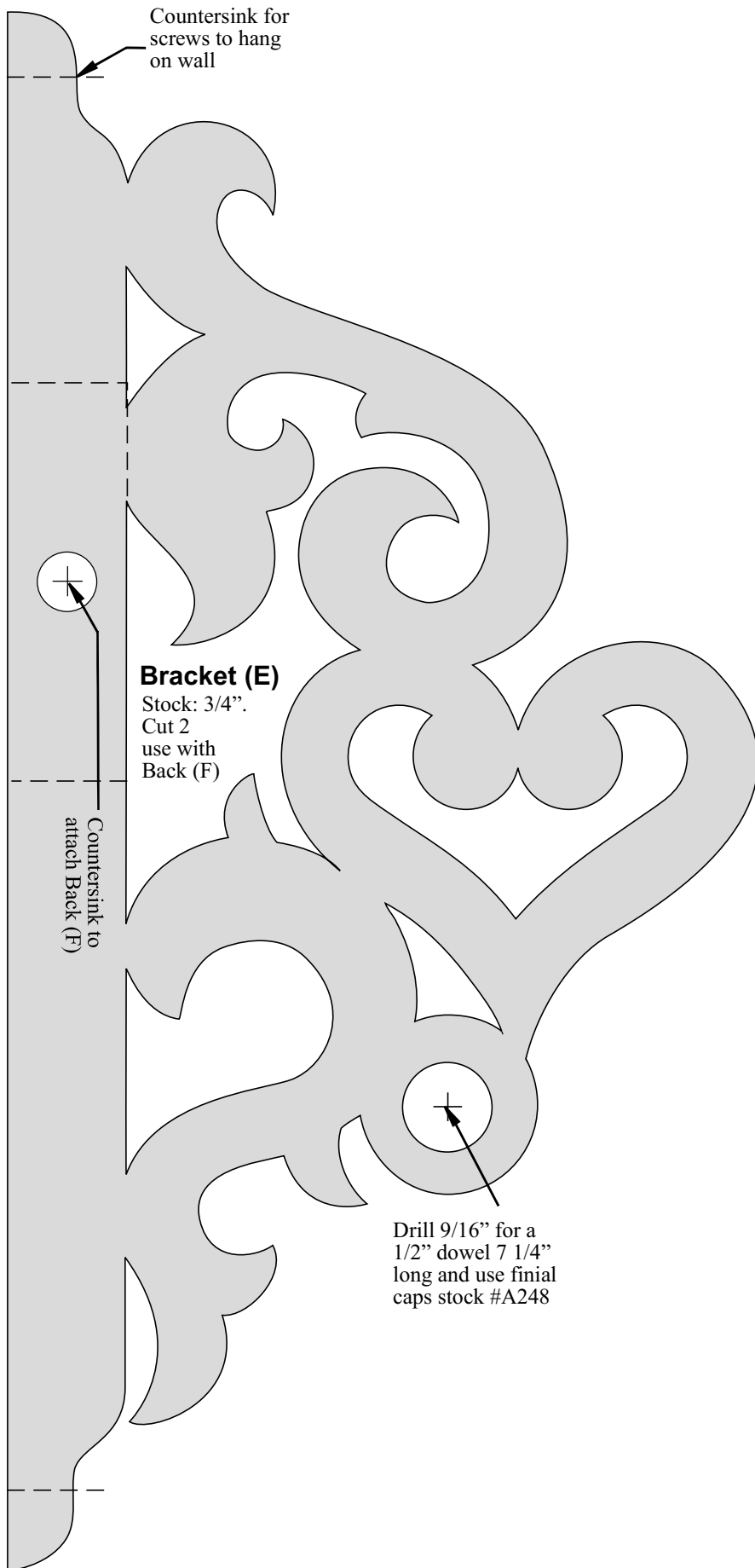
Drill 9/16" for a 1/2" dowel 14 1/2" long and use our finial caps stock #A248

#P289

Pattern overlap line

The Berry Basket © Copyright 2002





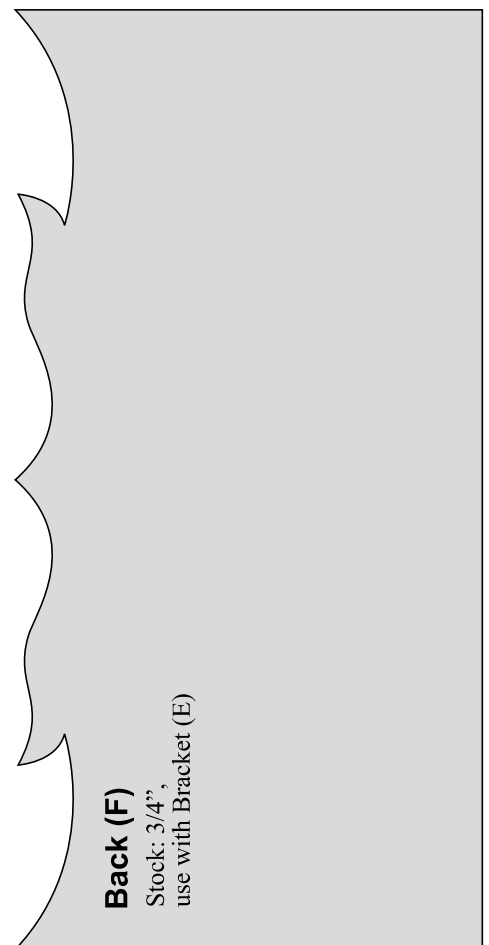
Countersink for screws to hang on wall

Bracket (E)

Stock: 3/4".
Cut 2
use with
Back (F)

Countersink to attach Back (F)

Drill 9/16" for a 1/2" dowel 7 1/4" long and use finial caps stock #A248



Back (F)

Stock: 3/4",
use with Bracket (E)

#P289